

Environmental Policy

River Deep Mountain High aims to consider the environmental impact of all aspects of its operational delivery. We commit to continually improve and consider how we can be greener on a regular basis.

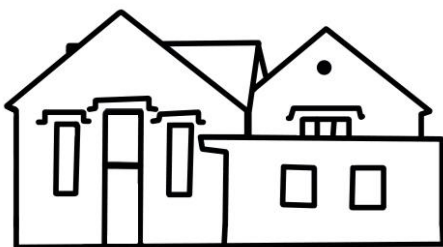
Steps we are currently taking

- Transport
We are looking into EV charging points. We encourage guests to enjoy walks from the site without driving.
- Recycling of packaging materials
We use a waste provider that recycles our waste as far as possible and doesn't rely on our guests separating waste correctly. We encourage the use of card packaging and waste paper to light fires.
- Minimising waste:
We do not provide any toiletries for short stay guests other than refillable handwash in bathrooms and refillable washing up liquid in the kitchens. We use a zero waste provider for the handwash and washing up liquid. We will provide zero waste dishwasher tablets for the cabin.
- Efficient use of water and energy
We encourage guests to bring their own bedding and towels across the site as standard. We discourage use of our bedding and the need for laundering of linen that has seen minimal use by charging extra. Linen is washed at 30deg where possible. It is not ironed or tumble-dried.

The bunkhouse showers are set to encourage sustainable levels of use to minimise hot water requirements.

Our hot tub is an appropriate size to the number of guests who use it at one time. As an off-grid hot tub it does not use electricity to constantly filter the water or provide bubbles and does not require any chemicals reducing the impact of the water outflow into the environment.

- Sources of power and heating
Our electricity contract is with a 100% renewables supplier. All wood provided for burning is from sustainable sources. We do currently use a form of coal for the stove in the bunkhouse – this is a more efficient way to heat the building than purely electric based radiators. We will work to reduce the need for this through building improvements.
- Building improvements
The cabin was built in 2021 to high efficiency standards. Improving the insulation of the bunkhouse is a high priority – we are using a sustainable cork insulation on the walls that works with the stone structure rather than using gypsum-based products.



River Deep Mountain High Bunkhouse and Cat's View



The Cabin